

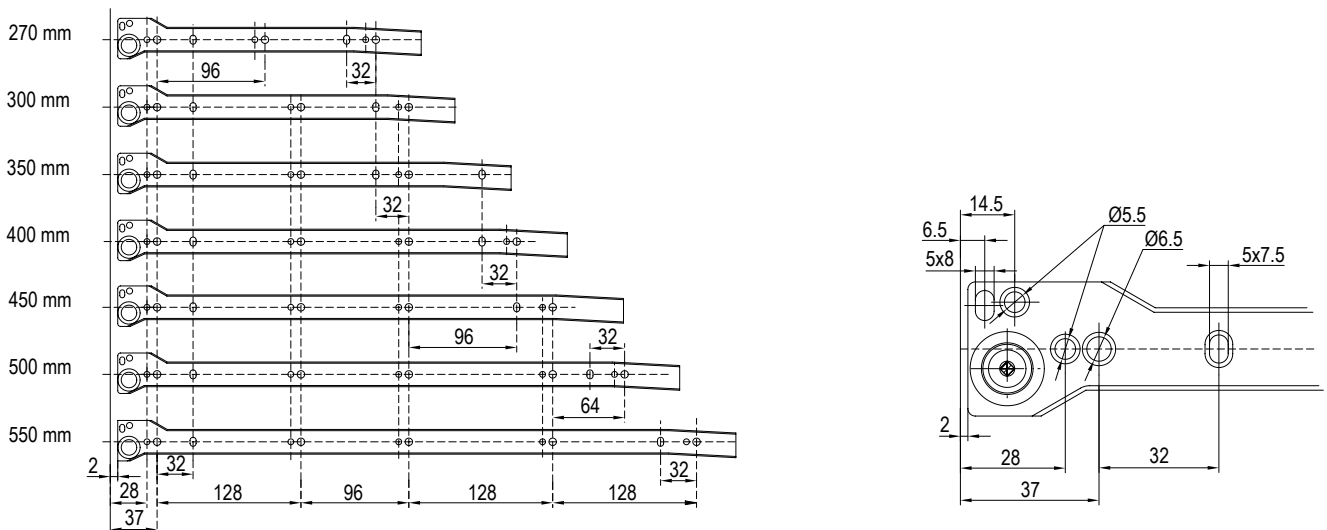
roll runner slides with side

CONTENTS

Strong roll runner slides with side



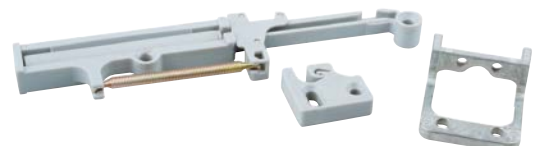
	height (mm)	54		86		118		150		railing	
		grey	white	grey	white	grey	white	grey	white	grey	white
length (mm)	270	×	×	286656	286646	×	×	286662	286623	×	×
	300	×	×	286657	286647	×	×	286663	286624	×	×
	350	×	×	286660	286648	×	×	286664	286625	×	×
	400	×	286676	286658	286649	×	286652	286665	286626	286668	286629
	450	286674	286672	286631	286638	×	286653	286633	286640	286635	286642
	500	286675	286673	286632	286639	×	286654	286634	286641	286636	286644
	550	×	×	286659	286650	×	286655	286666	286627	286669	286630
	600	×	×	286661	286651	×	×	286667	286628	286670	286671
external damper		11330M	11330M	11330M	11330M	×	11330M	11330M	11330M	×	×
cover caps		×	×	303899	303900	303899	303900	303899	303900	303899	303900

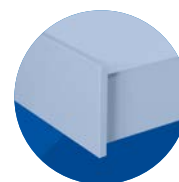


- railing mounting in the front using dowels $\varnothing 10$ mm
- faster drawer assembly compared to using classic roll runner slides

External damper

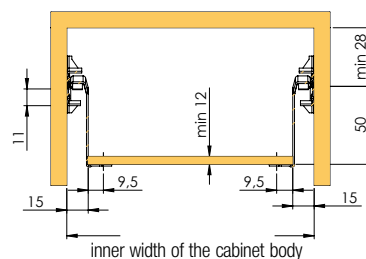
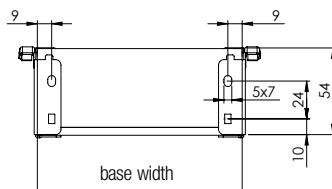
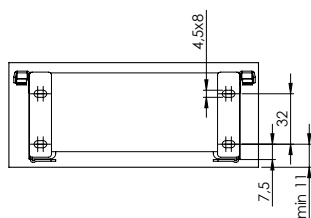
code	description
11330M	for metalboxes



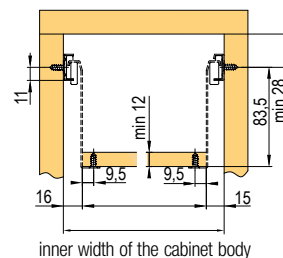
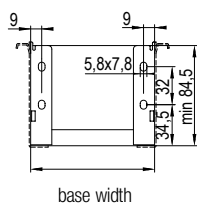
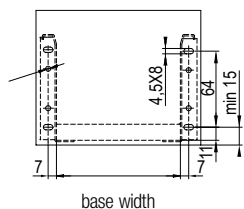


CONTENTS

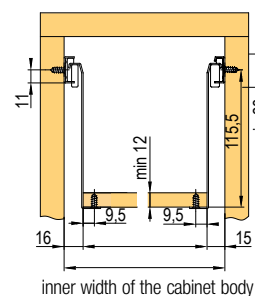
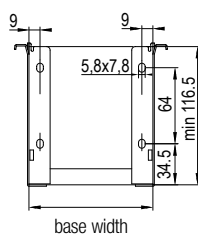
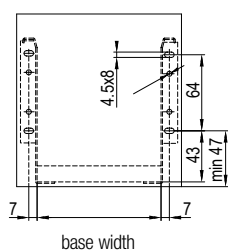
H54



H86



H118



H150

