



**NEW** ball bearing  
runner

**SOLID Slide**

**Durability, smooth operation, precision**



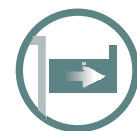
Solid Slide is the newest line of REJS ball bearing runners, which are characterised by even greater strength and fluidity of operation. Designed for various types of drawers, The Solid Slide is constructed to be quieter, more durable and easier to assemble.

## What does the solid slide offer?

- **Greater toughness** thanks to the use of more ball bearings. *The guides are tested for 50,000 cycles.*
- Galvanized Solid Slide **steel** which **will not corrode**.
- Easy access to stored products, thanks to **full extension** operation.
- **Smooth movement** thanks to a **cushioning system** that equalizes track action.
- **Gentle, soft closure of the drawer without clicking** is guaranteed by: two **springs** with a tightening force of **20N**, a metal **piston brake** and **tightening catch** made of flexible plastic.
- **Quiet operation** due to the use of a specialised lubricant.
- Easy disassembly of the **guide allows for easier installation**.
- **Mountable in drawers with a width of up to 1100 mm**. Using the appropriate mounting hitch.
- **8 rail lengths (from 250 to 600 mm)** for customization to the size and type of the planned drawer.
- Rejs and Solid Slide logos can be seen on plastic and metal elements.



soft close



full extension



45 mm



250-600 mm



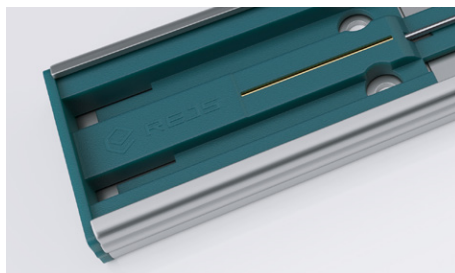
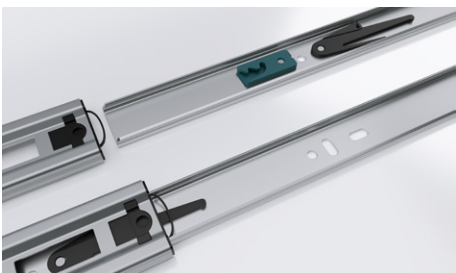
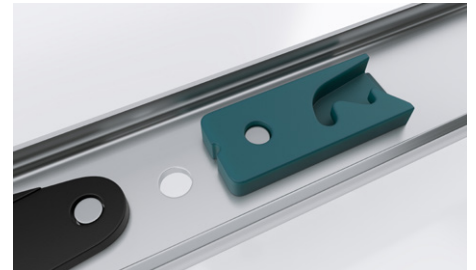
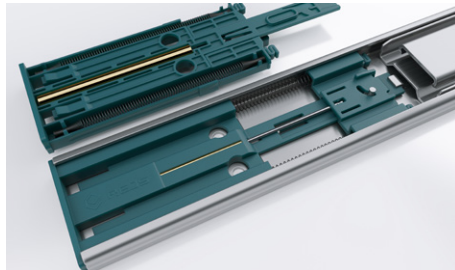
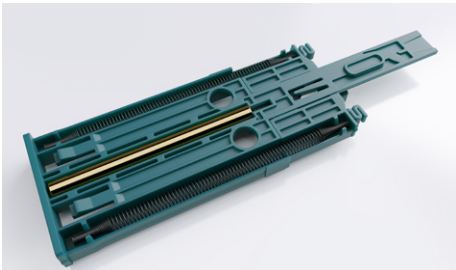
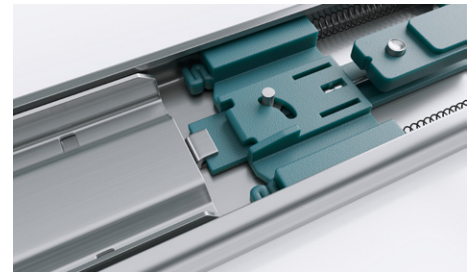
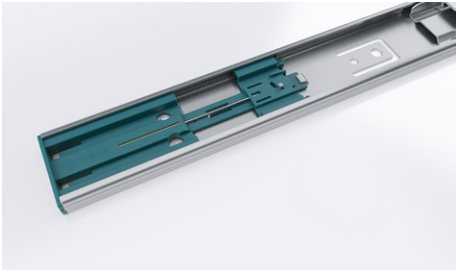
35 kg



release option

## Why is it so important?

The functionality of a draw system is greatly compromised when poorly mounted. A drawer that jams or doesn't close properly, especially under constant use is not fit for purpose. Regardless of whether mounted in the kitchen, bathroom, bedroom or living room, smooth and effective operation is the key. This is what the runners systems are responsible for. If these fail the furniture will lose its full functionality.



Thanks to its design, the Solid Slide drawer runner is very easy to install, which significantly improves the installation time.

## Possible applications of the Solid Slide

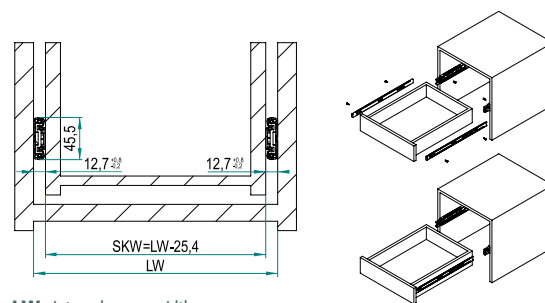
- kitchen furniture
- bathroom furniture
- wardrobes and cupboards
- chests of drawers in the living room and bedrooms
- office furniture



## Ordering

Nominal length of runner	index	loss of extension
250	TH03.0978.01.062	47
300	TH03.0979.01.062	17
350	TH03.0980.01.062	3
400	TH03.0981.01.062	-
450	TH03.0982.01.062	-
500	TH03.0983.01.062	-
550	TH03.0984.01.062	-
600	TH03.0985.01.062	-

## The formula for calculating the width



LW - internal corpus width  
SKW - internal width of the drawer

## Installation information - hole positioning and dimensions

