

Consult the installation manual for more details on drilling holes for assembly.

PIR4

Passive infrared sensor

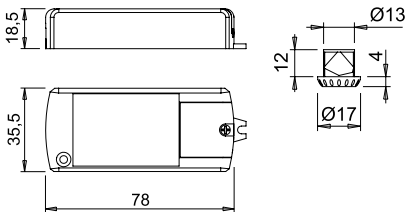
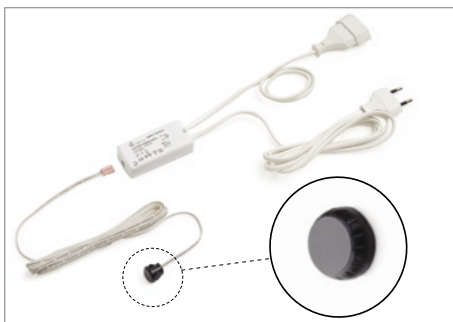
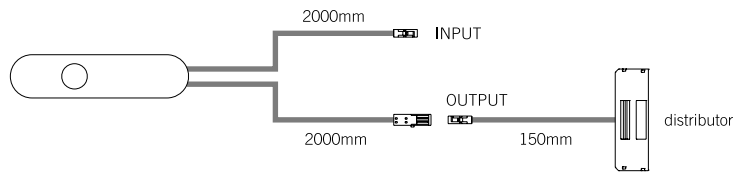


Code	Input	Output	Power	Connectors
17790_ _	24Vdc	24Vdc	60W	Micro24
17791_ _	12-24Vdc	12-24Vdc	30-60W	Micro12-Micro24

Code	Finish
03	black
10	aluminium



PIR4 is a sensor installed on the back of a door that activates when there are people within the detection radius. After approximately 30 seconds with no detection, **PIR4** automatically switches off the connected luminaires even if the door is open.



Consult the installation manual for more details on drilling holes for assembly.

LIMIT

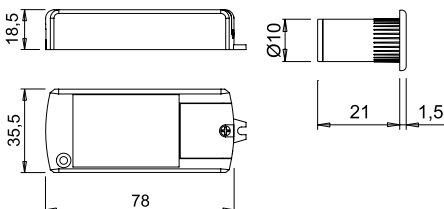
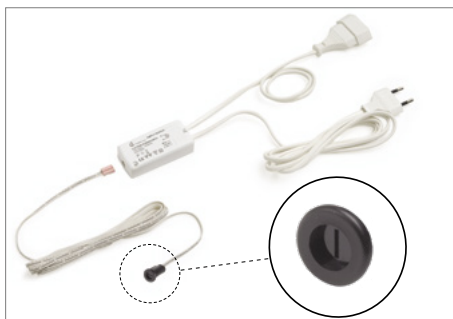
Back-of-door proximity sensor



Code	0835101
Input	220-240Vac
Output	220-240Vac
Power	150W
Input wiring	2000mm input cord with two-pole Europlug
Output wiring	500mm output cord with two-pole Europlug socket



LIMIT is an infrared sensor with limit-switch function for interior installation. The luminaires connected to **LIMIT** are turned on and off by opening and closing the door in front of the sensor.



Consult the installation manual for more details on drilling holes for assembly.

LIMIT XD-3

Back-of-door proximity recessed sensor



Code	1787201
Input	220-240Vac
Output	220-240Vac
Power	150W
Input wiring	2000mm input cord with two-pole Europlug
Output wiring	500mm output cord with two-pole Europlug socket



LIMIT XD-3 is an infra-red sensor with limit-switch function for interior installation. The luminaires connected to **LIMIT XD-3** are turned on and off by opening and closing the door in front of the sensor. With its rear diodes, the sensor can also be installed flush to the door.